

Packaging



Dairy



Food & Beverage



Automobile






**HIGH  
VISCIOUS**

Positive Displacement Pumps

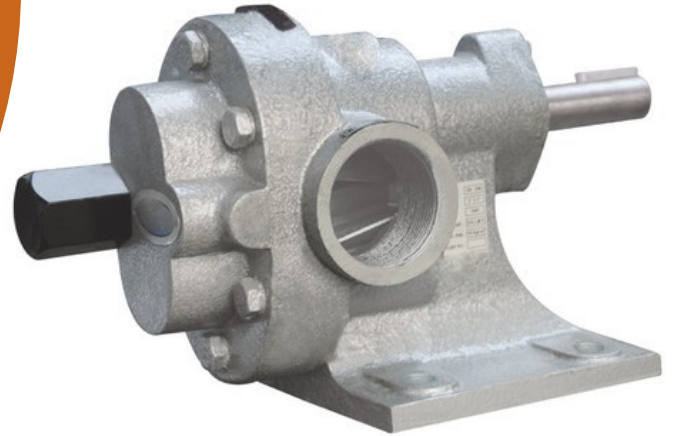
**EXTERNAL GEAR  
PUMP**

Contact Us

-  +91- 44-4301 2183 / +91-7200627289
-  [sales@neweraengineers.com](mailto:sales@neweraengineers.com)
-  No.96-A, TTK Road,, Alwarpet, Chennai,  
Tamil Nadu 600018,INDIA.

# EXTERNAL GEAR PUMP

Helical gear pumps are useful for pumping and transferring all viscous liquids, oils and petroleum products. Heavy duty gear pumps are a in complete Cast iron, WCB and SS-316 investment Cast construction with teflon coated or polymer bush and PTFE sealant. Suitable to handle acids, dyes, syrups and other corrosive chemicals



## About Pump

### Features

- Floating gear-design ensures uniform load distribution
- Heavy duty gear pump design for continuous application
- Herringbone rotor design eliminate side thrust
- Low-leakage path by design improve volumetric efficiency
- Modified tooth profile enhances tooth life.
- Optional steam jacket
- Shorter bearing span reduces bending effect

### M.O.C

- Cast iron
- WCB
- SS316

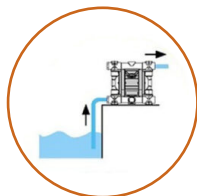
### Specifications

- Maximum Flow Rate 200 M.Cu/Hr
- Maximum Discharge Head or Pressure 12 Kg/Cm.Sq
- Maximum Viscosity 1,00,000 cps
- Maximum Temperature 200 Deg C

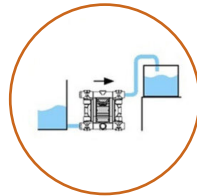
### Applications

- Chemical Industries
- Cosmetic Industries
- Dyeing & Printing Houses
- Food & Beverages Industries
- Paint Industries
- Pharmaceutical Industries

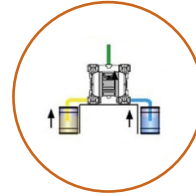
## Installations



Self Priming



Positive Suction Head



Twin Suction Manifold